

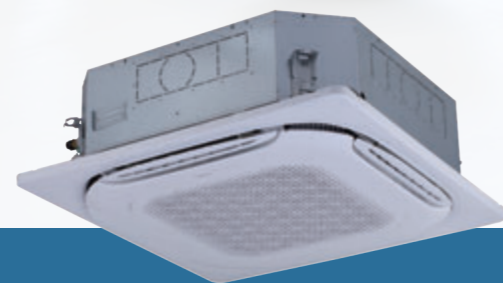
360°
airflow



Individual
louver control



Healthy
air supply



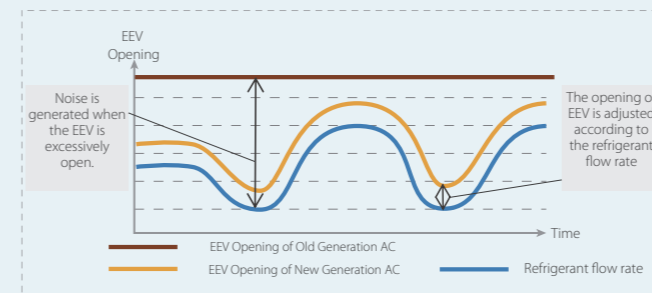
Four-Way Cassette



COMFORT

EEV automatic adjustment

When in heating standby mode, the indoor unit automatically adjusts the EEV opening according to the load to eliminate noise of refrigerant flowing.



Human Detect Sensor*

Using millimeter-wave radar sensor controller automatically turns indoor units on or off upon detecting that the room is occupied or unoccupied, ensuring climate control whilst minimizing energy consumption.



The indoor unit automatically runs when detecting human body

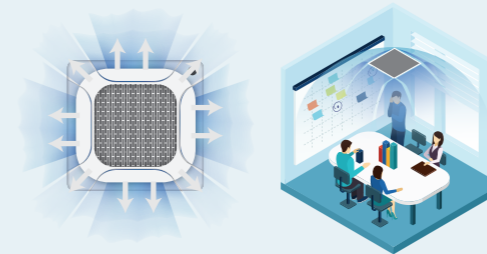
The indoor unit automatically stops when detecting absence

*This function is available as a customization option for V8 Four Way Cassette.

AIR FLOW

360° Airflow

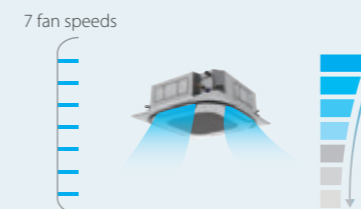
New design, round airflow path ensures uniform airflow and temperature distribution.



The continuous air supply port air supply area increases by 20%

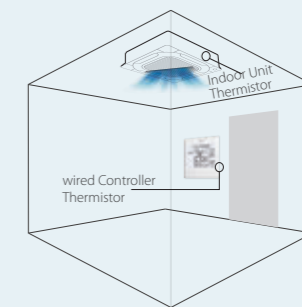
7 Fan Speeds

7 indoor fan speed options to meet the needs of different indoor conditions.



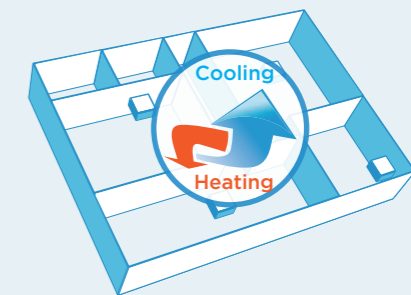
Two thermistors control

The indoor temperature can be checked using the thermistor in the wired controller as well as from the indoor unit



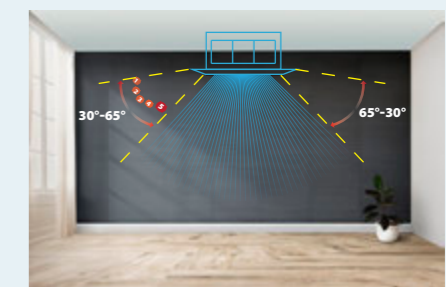
Auto Cooling-heating Changeover

Automatically selects cooling or heating mode to achieve the set temperature.



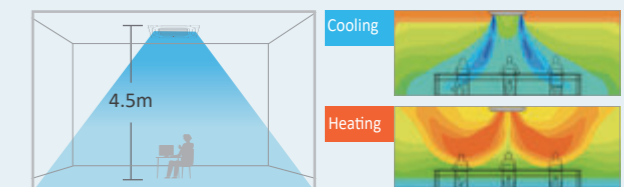
Multiple Steps Vertical Swing

The Four-way Cassette unit has a wide range of airflow angles from 30° to 65° and is equipped with a 5-step louver control and auto swing mode to better meet the needs of different customers



Long Distance Air Delivery

The Four-way Cassette has an additional 50Pa static pressure for long airflow delivery and is capable of being used in spaces up to 4.5m in floor height.



Specifications

Four-Way Cassette

Model			MIH28Q4N18	MIH36Q4N18	MIH45Q4N18	MIH56Q4N18
Power supply			1-phase, 220-240V, 50Hz			
Cooling ¹	Capacity	kW	2.8	3.6	4.5	5.6
		kBtu/h	9.6	12.3	15.4	19.1
	Power input	W	17.0	17.0	23	23
Heating ²	Capacity	kW	3.2	4.0	5.0	6.3
		kBtu/h	10.9	13.7	17.1	21.5
	Power input	W	17.0	17.0	23	23
Air flow rate ³ (0Pa)		m ³ /h	790/740/691/641/591/542/492	790/740/691/641/591/542/492	840/787/733/680/626/573/519	840/791/741/692/642/593/543
Sound pressure level ⁴ (0Pa)		dB(A)	30/29/28/27.5/27/26/25	30/29/28/27.5/27/26/25	33/32/31/30/29/28/27	33/32/31/30/29/28/27
Sound power level		dB(A)	43/42/41/41/40/39/39	44/43/42/42/41/40/39	49/48/47/46/45/44/43	49/48/48/47/46/45/44
Main body	Net dimensions ⁵ (W×H×D)	mm	840×204×840			
	Packed dimensions (W×H×D)	mm	940×250×940			
	Net/Gross weight	kg	18/20.5		19.5/22	
Panel	Net dimensions ⁶ (W×H×D)	mm	950×53×950			
	Packed dimensions (W×H×D)	mm	1020×90×1020			
	Net/Gross weight	kg	5.6/7.3			
Pipe connections	Liquid/Gas pipe	mm	Φ6.35/Φ12.7			
	Drain pipe	mm	OD Ø25			

Model			MIH71Q4N18	MIH80Q4N18	MIH90Q4N18
Power supply			1-phase, 220-240V, 50Hz		
Cooling ¹	Capacity	kW	7.1	8.0	9.0
		kBtu/h	24.2	27.3	30.7
	Power input	W	31	41	43
Heating ²	Capacity	kW	8.0	9.0	10.0
		kBtu/h	27.3	30.7	34.1
	Power input	W	31	41	43
Air flow rate ³ (0Pa)		m ³ /h	1000/943/886/829/772/715/658	1330/1239/1148/1057/965/874/783	1330/1239/1148/1057/965/874/783
Sound pressure level ⁴ (0Pa)		dB(A)	37/36/34/33/32/30/29	38/37/35/34/32/31/29	38/37/35/34/32/31/29
Sound power level		dB(A)	51/50/49/48/47/46/46	53/52/51/50/49/48/47	54/53/52/51/50/49/48
Main body	Net dimensions ⁵ (W×H×D)	mm	840×246×840		
	Packed dimensions (W×H×D)	mm	940×295×940		
	Net/Gross weight	kg	22/24.5		
Panel	Net dimensions ⁶ (W×H×D)	mm	950×53×950		
	Packed dimensions (W×H×D)	mm	1020×90×1020		
	Net/Gross weight	kg	5.6/7.3		
Pipe connections	Liquid/Gas pipe	mm	Φ9.52/Φ15.9		
	Drain pipe	mm	OD Ø25		

Notes:

- Indoor temperature 27°C DB, 19°C WB; outdoor temperature 35°C DB; equivalent refrigerant piping length 7.5m with zero level difference.
- Indoor temperature 20°C DB; outdoor temperature 7°C DB, 6°C WB; equivalent refrigerant piping length 7.5m with zero level difference.
- Air flow rate are from the highest speed to the lowest speed, total 7 rates for each model.
- Sound pressure level is from highest level to lowest level, total 7 levels for each model. Sound pressure level is measured 1.5m below the unit in a semi-anechoic chamber.
- Unit body dimensions given are the largest external dimensions of the unit, including hanger attachments.
- Exposed height of the panel after being installed on the ceiling.

Specifications

Four-Way Cassette

Model			MIH100Q4N18	MIH112Q4N18	MIH140Q4N18
Power supply			1-phase, 220-240V, 50Hz		
Cooling ¹	Capacity	kW	10.0	11.2	14
		kBtu/h	34.1	38.2	47.8
	Power input	W	54	61	89
Heating ²	Capacity	kW	11.2	12.5	16.0
		kBtu/h	38.2	42.7	54.6
	Power input	W	54	61	89
Air flow rate ³ (0Pa)		m ³ /h	1445/1363/1282/1200/1118/1037/955	1600/1497/1393/1290/1186/1083/979	1730/1624/1518/1412/1306/1200/1094
Sound pressure level ⁴ (0Pa)		dB(A)	39/38/37/36/35/34/33	41/40/38/37/36/34/33	43/42/40/39/37/36/34
Sound power level		dB(A)	54/53/52/51/50/50/49	57/56/55/54/53/52/51	58/57/56/55/54/53/52
Main body	Net dimensions ⁵ (W×H×D)	mm	840×288×840		
	Packed dimensions (W×H×D)	mm	940×335×940		
	Net/Gross weight	kg	24/26.5		26.5/29
Panel	Net dimensions ⁶ (W×H×D)	mm	950×53×950		
	Packed dimensions (W×H×D)	mm	1020×90×1020		
	Net/Gross weight	kg	5.6/7.3		
Pipe connections	Liquid/Gas pipe	mm	Φ9.52/Φ15.9		
	Drain pipe	mm	OD Ø25		

Model			MIH160Q4N18	MIH180Q4N18
Power supply			1-phase, 220-240V, 50Hz	
Cooling ¹	Capacity	kW	16	18
		kBtu/h	54.6	61.4
	Power input	W	110	145
Heating ²	Capacity	kW	18	20
		kBtu/h	61.4	68.2
	Power input	W	110	145
Air flow rate ³ (0Pa)		m ³ /h	2100/1900/1760/1630/1500/1380/1270	2300/2140/1960/1770/1600/1430/1270
Sound pressure level ⁴ (0Pa)		dB(A)	48/46/44/43/41/39/37	52/49/47/45/42/39/38
Sound power level		dB(A)	57/56/54/52/50/47/46	60/58/56/54/52/49/46
Main body	Net dimensions ⁵ (W×H×D)	mm	950×300×950	
	Packed dimensions (W×H×D)	mm	1050×350×1050	
	Net/Gross weight	kg	32.6/37.2	32.7/37.3
Panel	Net dimensions ⁶ (W×H×D)	mm	1050×55×1050	
	Packed dimensions (W×H×D)	mm	1115×100×1115	
	Net/Gross weight	kg	7.4/9.7	
Pipe connections	Liquid/Gas pipe	mm	Φ9.52/Φ15.9	Φ9.52/Φ19.1
	Drain pipe	mm	OD Ø25	

Notes:

- Indoor temperature 27°C DB, 19°C WB; outdoor temperature 35°C DB; equivalent refrigerant piping length 7.5m with zero level difference.
- Indoor temperature 20°C DB; outdoor temperature 7°C DB, 6°C WB; equivalent refrigerant piping length 7.5m with zero level difference.
- Air flow rate are from the highest speed to the lowest speed, total 7 rates for each model.
- Sound pressure level is from highest level to lowest level, total 7 levels for each model. Sound pressure level is measured 1.5m below the unit in a semi-anechoic chamber.
- Unit body dimensions given are the largest external dimensions of the unit, including hanger attachments.
- Exposed height of the panel after being installed on the ceiling.